

---

# GOLD & DIAMOND RESIDENCES



**CYPRINO**  
HIGH-END PROPERTIES



---

# OVERVIEW

Secure your **piece of paradise** in one of the most sought-after locations in Limassol.

This latest development is now available for purchase off-plan. Secure your piece of paradise in one of the most sought-after locations in Limassol.

This project will be the ultimate in luxury living and will be built to the highest standards with prominent use of wood, marble, and glass to take advantage of the breathtaking views of the Mediterranean.

The project will consist of 2 apartment blocks namely the Gold Residence and the Diamond Residence. Both blocks will have only 3 apartments on each floor plus 3 penthouses on the fourth floor with rooftop gardens, BBQ areas, and private swimming pools for relaxation and entertainment.

The apartments will be built to the highest standards and will represent modern living reflecting its upper-class residential status. All apartments will come with an Energy Performance Certificate rated Grade A and expected delivery will be in 15-18 months.





---

# LOCATION

The Gold and Diamond Residences Project will be located in the **highly desirable, prestigious, and elite area** of Columbia.

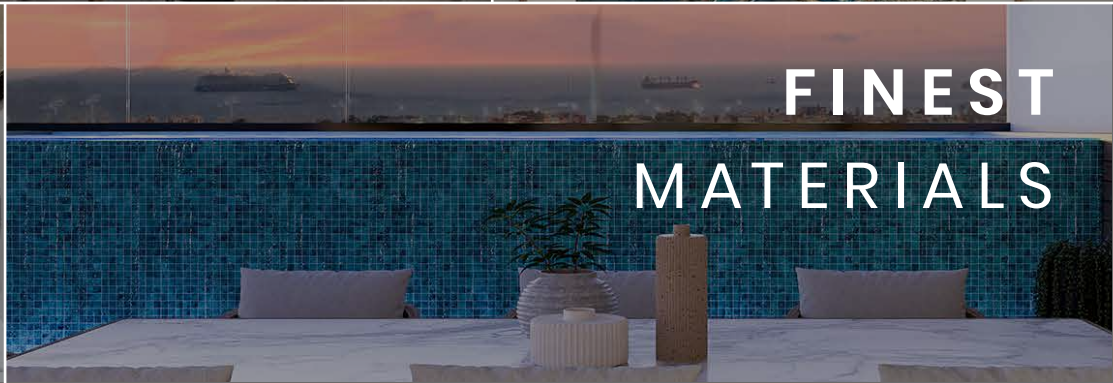
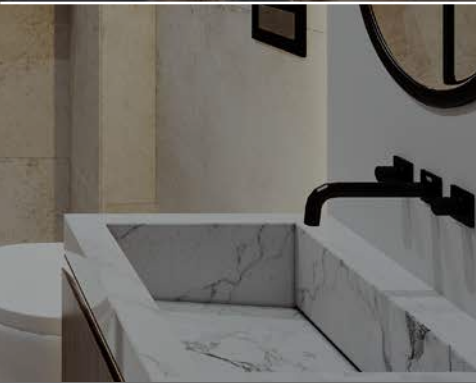
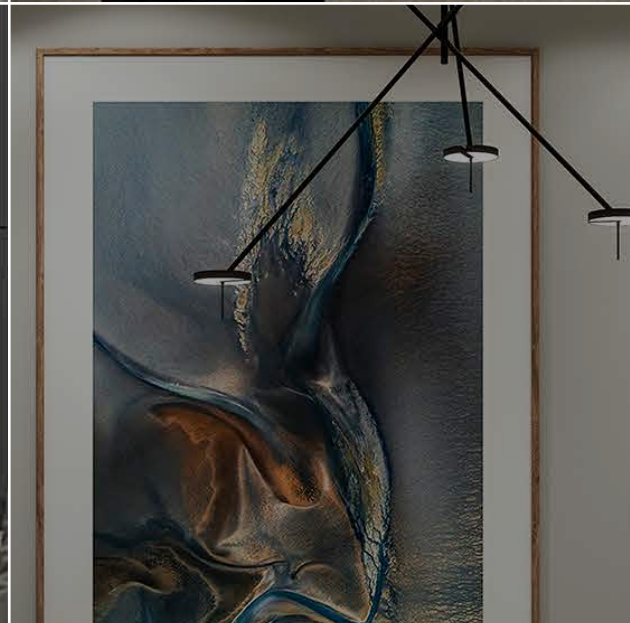


The apartments will be built among other similar quality homes in arguably the most prime location in Limassol.

The project offers close access to the motorway and the bustling Limassol tourist area with its multitude of restaurants, taverns, bars, and nightclubs. A few minutes away is the Limassol Seafront with its infinite sandy beaches, interesting historical sites and a coastal walkway that stretches for many kilometers for the walking enthusiasts.

Finally, Limassol is home to many offshore companies and Financial and Insurance Services.

It is a dynamic small metropolis and home to many people from a variety of ethnicities.

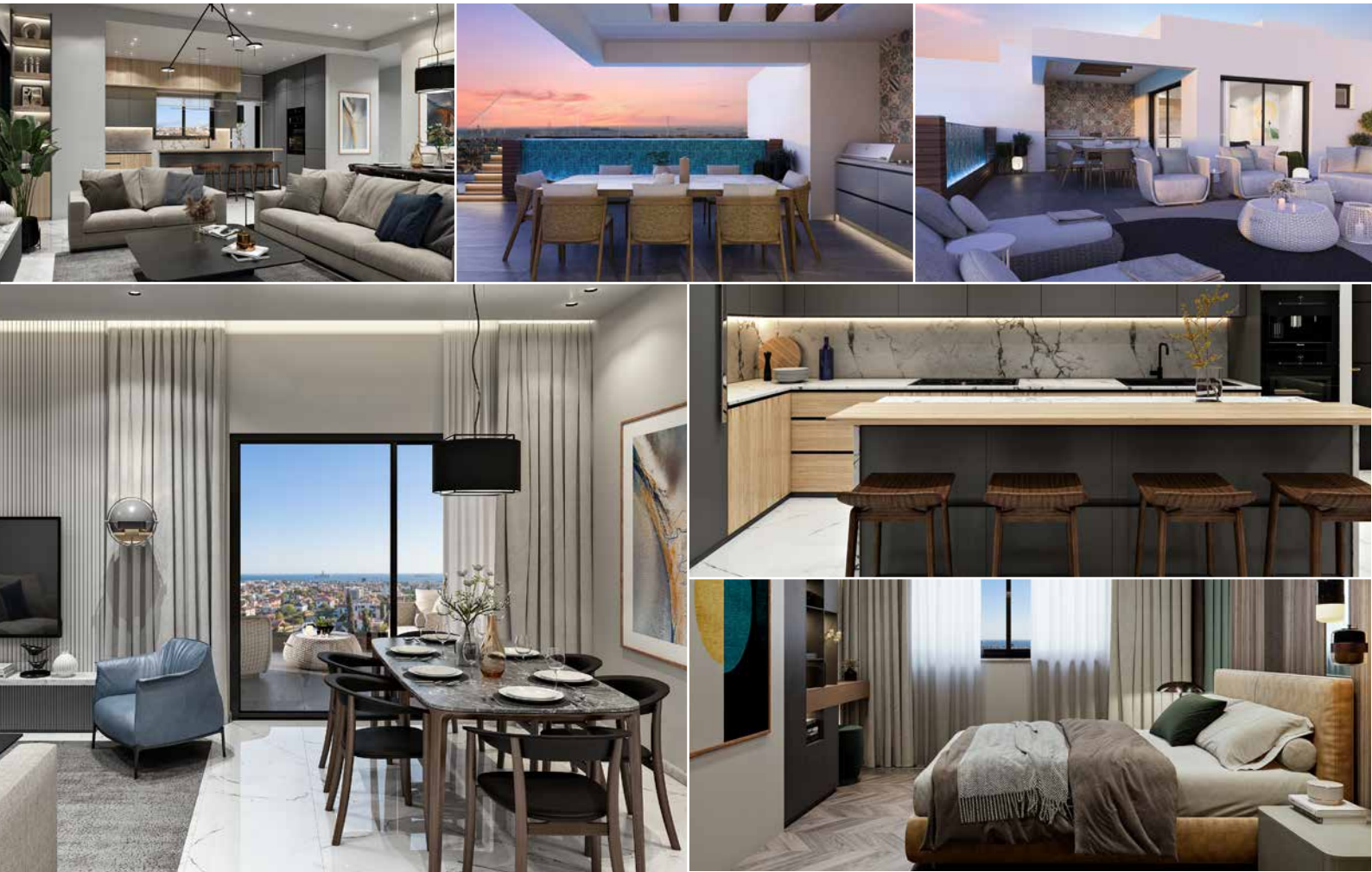


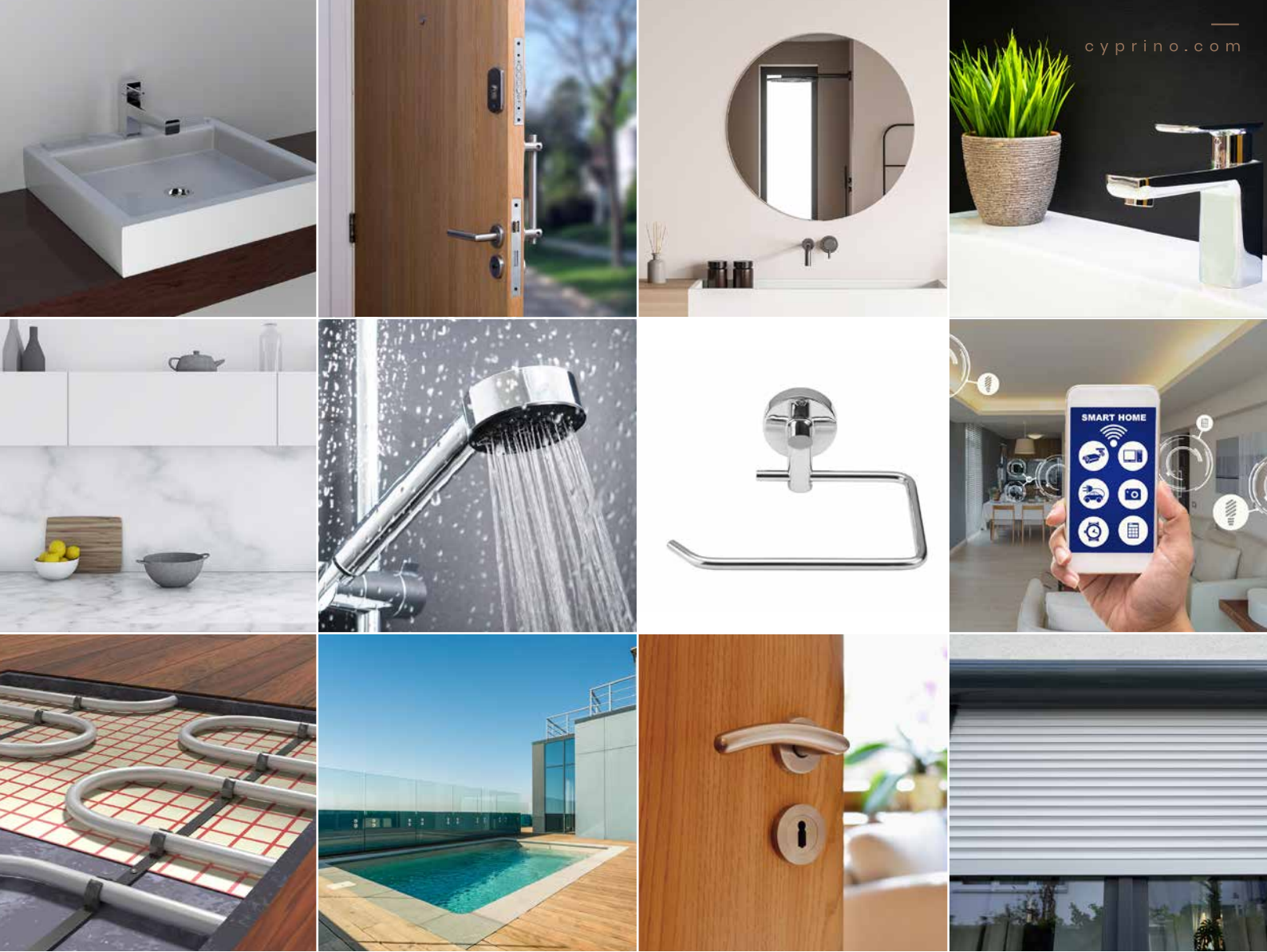


---

# CONSTRUCTION QUALITY

**Innovative** architecture combined with **quality** construction and quality of the materials define the quality as well as the energy efficiency of the development.





---

## FITTINGS

A **luxury** living experience.

All apartment residences are built to the highest standards, incorporate the finest materials, and offer additional leisure and lifestyle amenities that make a remarkable place to call home.

---

# DEVELOPMENT PLANS

The blueprints of a development are the first steps to its **quality** and its **success**, get an idea of the scale of each unit as well as the overall project





---

SECURE YOUR  
PIECE OF PARADISE

[cyprino.com](https://cyprino.com)



**CYPRINO**  
HIGH-END PROPERTIES